

USR 1100



Unified Storage Router 10G iSCSI-to-Fiber Channel Router

Benefits

- Consolidate storage by creating larger SANs extending over longer distances (SAN-over-WAN)
- Delivers the benefits of SAN storage at a significant discount to Fibre Channel SAN storage
- 10G Ethernet access to Fibre Channel SANs

Features

- Hot-swappable dual router blades with multi-path options for High Availability (HA) and load balancing
- Superior performance: 1130 MBps with 8G FC ports
- Power efficient: Uses < 200W
- Supports LUN sizes > 2TB
- Supports integrated solid state disks (SSD)
- Attach servers to Fibre Channel SANs with any major iSCSI Initiator
- Supports virtualization
- Easy-to-use GUI for quick installation
- Sophisticated web-based GUI & CLI management

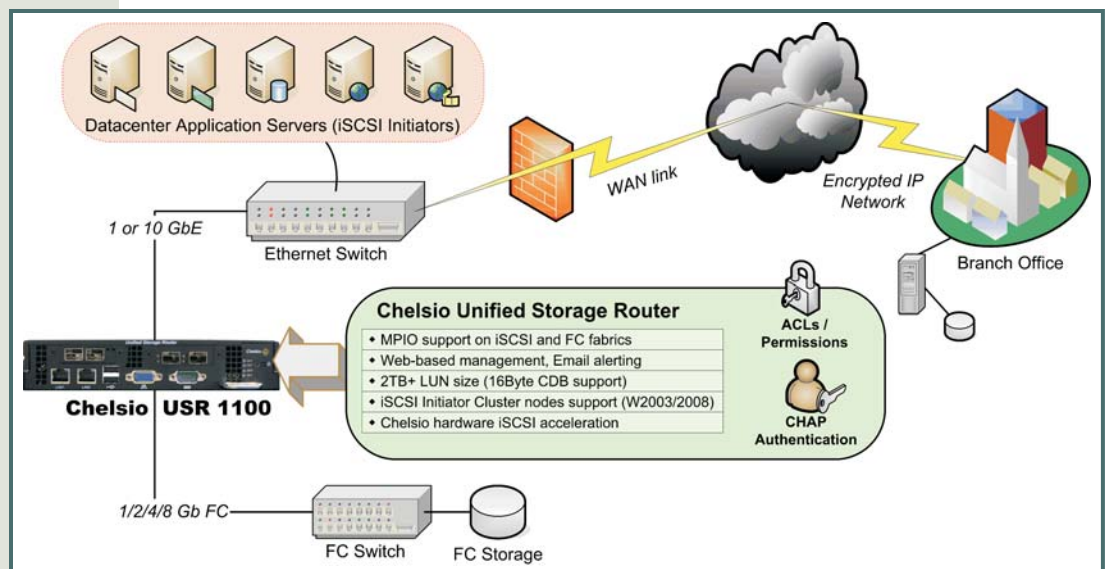


Cost-effective solution for high-performance FC SAN utilization.

IN MID-RANGE and enterprise businesses, rapid growth increases the cost of operations and spreads critical business data and resources across multiple systems and applications. Chelsio's 10G iSCSI-to-FC router extends the Fibre Channel SAN investment with the ability to integrate low-cost Ethernet-connected servers into the SAN, without requiring additional storage arrays or management costs.

Fibre Channel SANs are able to leverage IP networks and extend SAN advantages into smaller departments and remote locations where budget constraints would not allow for a FC SAN. This enables storage consolidation by creating larger SANs extending over longer distances providing access to storage that can be scaled/re-allocated when needed.

Instead of potentially underutilized, direct-attached, server-dedicated storage, a multi-protocol SAN provides access to storage that is allocated when needed, improving asset utilization and enabling new applications.



Chelsio's Unified Storage Router offers a high-performance iSCSI-to-Fibre Channel mapping, providing a solution for building a modular multi-protocol SAN design with increased scalability, stability, and ROI on storage infrastructure.

Specifications

iSCSI Initiator Client OS support

- Microsoft Windows 2003, 2008
- RedHat Enterprise Linux 4, 5
- SuSE Linux Enterprise Server 9 & 10
- Sun Solaris 10
- VMware ESX 3.5

Protocol support

- FTP
- iSCSI HBA to FC Storage Array Gateway
- MPIO, ACLs/LUN masking
- CHAP authentication
- VMware VMotion
- VLAN
- HA failover
- FC-AL and FC-SW

Configuration and management

- Web-based & CLI
- Configuration Wizard (automatic configuration service)
- Automatic configuration for High Availability
- Performance monitoring and profiling
- Online upgrade of node software
- High availability and multiple redundancy options
- Multiple mapping methods of iSCSI to FC SANs to provide flexibility

Ordering Info

USR1100-EFC-FB	Unified Storage Router 1100, single blade with front-to-back airflow
USR1100-EFC-BF	Unified Storage Router 1100, single blade with back-to-front airflow
USR1100-RK	Unified Storage Router Dual-Blade Enclosure and Rail Kit

Other Features

- Extends FC SAN solutions with integrated multi-protocol support
- Asynchronous instant alerting (no polling)
- Volume replication/continuous mirroring to a peer USS/USR storage volume
- Backup and restore
- Tiered licensing and evaluation licensing

INFORMATION IN THIS DOCUMENT IS PROVIDED IN CONNECTION WITH CHELSIO PRODUCTS. NO LICENSE, EXPRESS OR IMPLIED, BY ESTOPPEL OR OTHERWISE, TO ANY INTELLECTUAL PROPERTY RIGHTS IS GRANTED BY THIS DOCUMENT. EXCEPT AS PROVIDED IN CHELSIO'S TERMS AND CONDITIONS OF SALE FOR SUCH PRODUCTS, CHELSIO ASSUMES NO LIABILITY WHATSOEVER, AND CHELSIO DISCLAIMS ANY EXPRESS OR IMPLIED WARRANTY, RELATING TO SALE AND/OR USE OF CHELSIO PRODUCTS INCLUDING LIABILITY OR WARRANTIES RELATING TO FITNESS FOR A PARTICULAR PURPOSE, MERCHANTABILITY, OR INFRINGEMENT OF ANY PATENT, COPYRIGHT OR OTHER INTELLECTUAL PROPERTY RIGHT. CHELSIO PRODUCTS ARE NOT INTENDED FOR USE IN MEDICAL, LIFE SAVING, OR LIFE SUSTAINING APPLICATIONS. CHELSIO MAY MAKE CHANGES TO SPECIFICATIONS AND PRODUCT DESCRIPTIONS AT ANY TIME, WITHOUT NOTICE.

Hardware Specifications

Ports

- Two 8Gb FC ports with fabric/loop/direct-attach modes
- Two 10GbE ports with hardware iSCSI acceleration
- Two 1GbE ports
- Management port: 100M/1GbE
- Two USB 2.0 ports

Performance

- iSCSI: 1130MBps max with 8Gb FC, 750MBps max with 4Gb FC
- Fibre Channel: 800MBps max
- IOps: 100K per port
- Server connections: Up to 32K
- iSCSI connections: Up to 16K
- iSCSI Digest at line rate
- 1500B frames at line rate

Physical

- Dimensions: 1.75" x 8.25" x 18.5" or 44mm x 210mm x 470mm
- Full rack-width 1U chassis for two units available
- Horizontal or vertical mountable

System cooling

- Three 40x28mm fans
- Air flow: front-to-back and back-to-front versions available
- Smart Fan capable

Operating Environment

- Operating temperature range: 10 to 35°C or 50 to 95°F
- Non-operating temperature range: -40 to 70°C or -40 to -158°F
- Humidity range: 8 to 90% non-condensing
- Non-operating humidity range: 5 to 95% non-condensing
- Power consumption: < 200W

