

Unified Manager

Central Management of Chelsio's NIC, TOE, iSCSI, and Boot Solutions



Benefits

- Manage all Chelsio hardware and related software in one window, from anywhere
Reduces management costs
- Centralizes management of the SAN
- Centralizes management of Chelsio adapters from anywhere on the network
- Centralizes management of cluster network
- Combining with Chelsio's Unified Storage provides an end-to-end SAN management solution

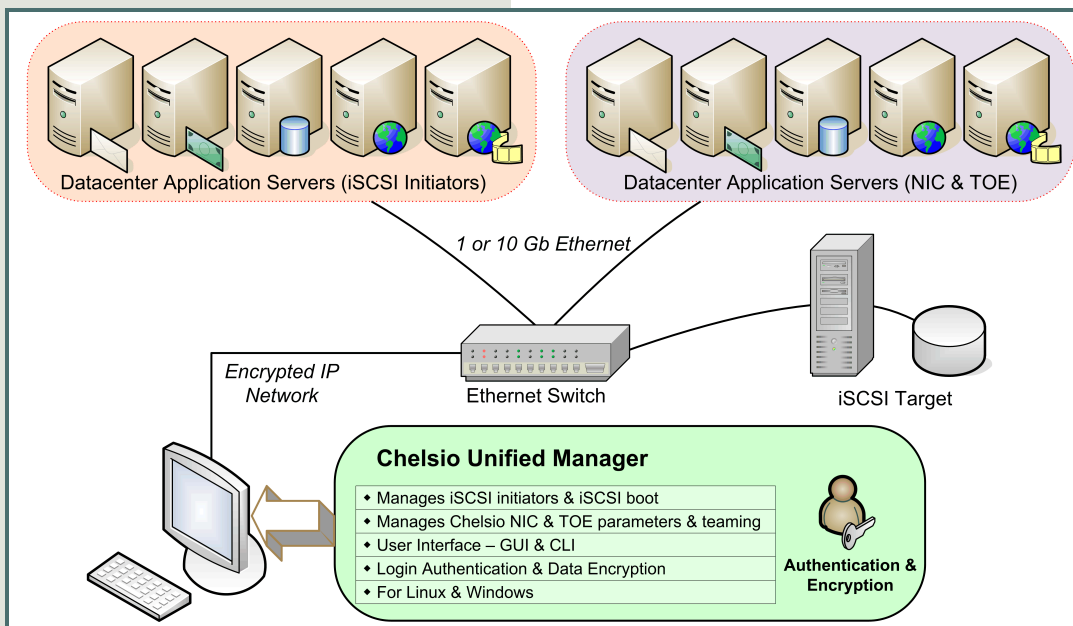
CHELSIO'S Unified Manager product centrally manages all Chelsio network adapter cards on the network across Windows and Linux environments. It includes an intuitive user interface through its graphical user interface (GUI) or through the command line interface (CLI) tool. It manages the networking enterprise by providing a simple, intuitive, and fast way to manage each iSCSI initiator, iSCSI target (Linux Only), TOE, NIC and OFED on the network.

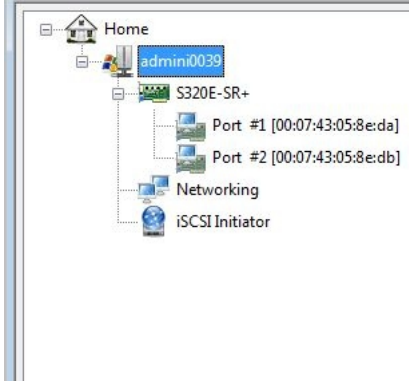
In two main areas, Unified Manager enables the management of all aspects of the client side of the iSCSI SAN. First, its ability to configure the Chelsio adapter's iSCSI boot option ROM without entering each individual adapter's configuration screen saves large amounts of an administrator's time. Secondly, for Windows and Linux users alike, the ability to manage a group of iSCSI initiators centrally from a common user interface remotely is particularly powerful. Unified Manager fully supports the Microsoft Windows initiator as well as Linux's Open-iSCSI initiator. The Chelsio iSCSI initiator is also supported.

Additionally, Unified Manager allows for Chelsio adapter NIC and TOE parameters to be centrally managed through the same easy-to-use user interface. It can bring interfaces up or down, team/bond interfaces together, tune parameters for optimal performance, and any number of administrative tasks normally done at each individual

machine. Driver installation, discovery of UM agents, filtering and traffic management features are few latest additions to the UM 1.1.

Chelsio's Unified Manager is an indispensable tool for saving administrator's time for managing the network and SAN. Chelsio's high performance network adapters with its Unified Wire approach to networking can now be managed centrally in a simple and fast way!





admini0039

System Summary

Property	Value
Hostname	admini0039
Connected via (IP:Port):	10.193.168.48:35001
Chelsio cards:	1
License:	present
Operating System:	Windows Server 2003 Service Pack 1
Platform:	x86_64 (amd64 / x64)

Licensing

Card summary

Property	Value
PCI ID (vendor:device):	1425:0031
PCI bus location (bus:device.function):	01:00:00
Card serial number:	PT39080187
Factory MAC address:	00:07:43:05:8E:DA
Option ROM:	Not present or unsupported version
Firmware version:	T 7.7.0 1.1.0
Ethernet ports:	2
OS device:	Chelsio S320 10G Ethernet Function Enumerat
Hardware is TCP Chimney offload enabled:	Yes
In maintenance mode:	No

Port summary

Property	Value
Device name:	Local Area Connection 2
Connector:	Optical
Link:	10Gb/s Full duplex

Port statistics

Statistic	Value
tx_octets	1376074
tx_frames	5265
tx_ucast_bytes	0
tx_mcast_frames	0
tx_mcast_bytes	0
tx_bcast_frames	4650
tx_bcast_bytes	0
tx_good_frames	9915
tx_pause	0
tx_underrun	0
tx_bad_frames	0
tx_frames_64	194
tx_frames_65_127	518
tx_frames_128_255	1585
tx_frames_256_511	2968
tx_frames_512_1023	0
tx_frames_1024_1518	0
tx_frames_1519_max	0
rx_octets	15774741
rx_frames	134955
rx_ucast_bytes	0
rx_mcast_frames	0
rx_mcast_bytes	0
rx_bcast_frames	134285
rx_bcast_bytes	0
rx_good_frames	269240
rx_pause	0
rx_fcs_errs	0
rx_jabber	0

Port settings

Save or discard port settings:

Property	Value
MTU (in bytes):	1500
Tx checksum offload enabled:	Yes
Rx checksum offload enabled:	Yes
Tx pause frame support enabled:	Yes
Rx pause frame support enabled:	Yes
Link speed and duplex operation:	10Gb/s Full duplex
Hardware protocol (TCP/RDMA/iSCSI) offload:	Yes
TCP chimney offload enabled:	No
Receive side scaling enabled:	Yes
Performance mode enabled:	Yes
Large segment offload enabled:	Yes
iSCSI function enabled:	Yes
iWARP function enabled:	Yes
Queue sets:	2
VLAN enabled:	No
VLAN ID:	0
IPv6 Checksum offload enabled:	Yes

Features

iSCSI Management Support

- Microsoft iSCSI initiator
- Linux Open-iSCSI & Chelsio initiator
- Chelsio iSCSI boot
- iSCSI Target

Chelsio Network Card Support

- Chelsio S- and N-series card support
- Includes 10Gb and 1Gb offerings

Manages

- Driver installation
- NIC and TOE Configuration
- PXE, iSCSI boot option ROM
- Network parameter configurations
- Network teaming/bonding
- Network filtering and Traffic management
- Network statistics graph
- Network troubleshooting console
- Cluster installation and configuration

OS Support

- Windows Server 2003 and 2008, Vista, 32- and 64-bit
- Linux RHEL 4 and 5, SLES 10 and 11, 32- and 64-bit

User Interfaces

- Graphical User Interface (GUI)
- Remote Scriptable Command Line Interface (CLI)

Security

- Login authentication
- Encrypted communication between management application and managed system

Logging

- File based
- Searchable

Scalable

- Up to 2048 nodes

Ordering Info

UM-1.1 Unified Manager

INFORMATION IN THIS DOCUMENT IS PROVIDED IN CONNECTION WITH CHELSIO PRODUCTS. NO LICENSE, EXPRESS OR IMPLIED, BY ESTOPPEL OR OTHERWISE, TO ANY INTELLECTUAL PROPERTY RIGHTS IS GRANTED BY THIS DOCUMENT. EXCEPT AS PROVIDED IN CHELSIO'S TERMS AND CONDITIONS OF SALE FOR SUCH PRODUCTS, CHELSIO ASSUMES NO LIABILITY WHATSOEVER, AND CHELSIO DISCLAIMS ANY EXPRESS OR IMPLIED WARRANTY, RELATING TO SALE AND/OR USE OF CHELSIO PRODUCTS INCLUDING LIABILITY OR WARRANTIES RELATING TO FITNESS FOR A PARTICULAR PURPOSE, MERCHANTABILITY, OR INFRINGEMENT OF ANY PATENT, COPYRIGHT OR OTHER INTELLECTUAL PROPERTY RIGHT. CHELSIO PRODUCTS ARE NOT INTENDED FOR USE IN MEDICAL, LIFE SAVING, OR LIFE SUSTAINING APPLICATIONS. CHELSIO MAY MAKE CHANGES TO SPECIFICATIONS AND PRODUCT DESCRIPTIONS AT ANY TIME, WITHOUT NOTICE.