

BlueArc® JetCenter™ for vSphere

Simplify Data Management and Protection with vCenter integrated management software

HIGHLIGHTS

- Integrated VMware vCenter plug-in for a single point of management
- Instantaneous and VM consistent snapshots
- Offloads data protection tasks from virtual servers, improving VM performance
- Create space efficient writable VM clones using BlueArc JetClone software
- Simplified management and protection allows broader deployment of VMs
- 256TB file system delivers greater scalability and increases deployment flexibility
- Policy based snapshots reduces administration burden
- Easily protect data against disasters with highly efficient replication to DR site

Simplifying Data Protection

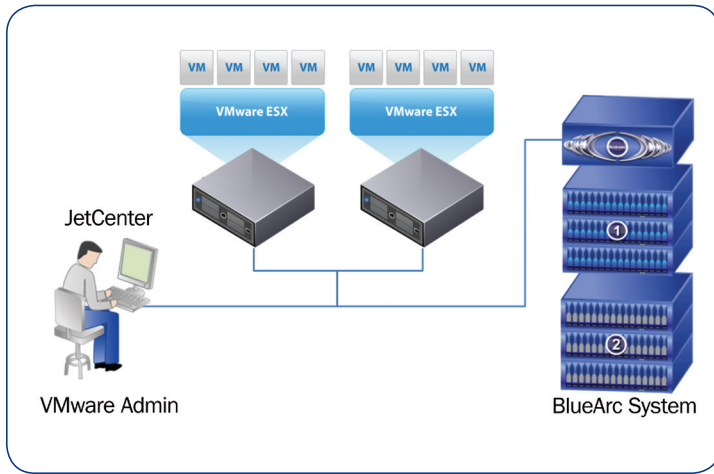
Server virtualization is a revolutionary technology that allows IT administrators to improve server efficiencies and reduce the number of physical servers resulting in lower data center operating costs through improvements in power, cooling and floor space utilization. The ability to quickly deploy new servers without needing more server hardware means that IT administrators are able to respond to business needs quickly and easily. Unfortunately, this ease of deployment hasn't been extended to the storage system that hosts the virtual machine images. Traditional SAN or Fibre Channel storage for dynamic VMware environments is complex to manage, and can quickly become a drain on a VMware administrator's productivity. Protecting data in this environment often creates headaches for both VMware and storage administrators, requiring close coordination to ensure backups are consistent and easily recoverable. The complexity of storage provisioning and difficulty protecting valuable data have forced IT administrators to forego broad adoption of virtualization in their data centers.

BlueArc JetCenter for vSphere

BlueArc JetCenter for vSphere delivers simple and efficient data protection for virtual environments. Combined with BlueArc's highly efficient snapshot technology, and deployed as a plug-in to VMware's vCenter console, JetCenter software provides a single point of control for BlueArc snapshots, whether used for backup and recovery, or for creating space efficient, writable clones of virtual machines. By simplifying storage and data management tasks, and providing an integrated suite of data protection tools, BlueArc enables customers to deploy server virtualization more broadly and realize the full potential of the benefits of a virtualized data center.

Fast, Optimized VM Cloning with BlueArc JetClone

A powerful feature of VMware is the ability to quickly create new, complete servers with the click of a button. Server provisioning tasks that used to be measured in days can now be completed in minutes by creating virtual machines from master virtual server templates. BlueArc JetClone improves on this feature by creating file level, writable clones of VMDK images in just seconds, without duplicating the entire VMDK and consuming valuable storage space.



Integrated with VMware vCenter, BlueArc JetCenter enables VMware administrators to easily protect data

JetClone allows IT administrators to maintain maximum performance and storage efficiency by eliminating the creation of duplicate data. The fastest deduplication technology in the world will never be as efficient as never creating duplicate data in the first place. When used with BlueArc’s 256TB file system, VMware administrators have the flexibility of deploying 100’s or 1000’s of VM clones on a single file system, simplifying their VM storage environment.

Managed from the JetCenter console within vCenter, JetClone provides a simple user interface that quickly and easily provisions new VMs from existing NFS file system capacity. JetCenter moves the creation and management of clones to the BlueArc server, ensuring that the vSphere server’s computing capacity remains fully dedicated to its VMs.

Policy Based Snapshots for Protecting Virtual Machines

Snapshots are a fast and efficient way to create instant point-in-time images of files, volumes or filesystems. BlueArc JetCenter simplifies data protection for virtual machines by automating the scheduling, creation and management of BlueArc snapshots of virtual machines and VMDKs. As an integrated plug-in to vCenter, JetCenter allows VMware administrators to work from within their existing management interface to create snapshots for backup or recovery of virtual machines and VMDK files quickly and easily.

JetCenter’s policy engine provides an intuitive interface for administrators to easily create snapshot schedules that fit their business needs. By offloading snapshot creation to the BlueArc server, snapshots can be taken in seconds, allowing virtual machines to be backed up as often as needed without interrupting critical applications that are running on those machines.

High Speed Disaster Recovery

BlueArc JetMirror™ reduces the time required to replicate file systems for data protection and disaster recovery. Working with JetCenter snapshots, JetMirror automates remote replication of virtual machine images, over any distance, without impacting the performance of virtual machines. In the event of a disaster, a remote JetMirror can easily be brought online for fast and efficient business continuance.

Simplify Without Compromise

BlueArc provides the ideal solution to manage, protect and recover your virtual environment. BlueArc JetCenter for vSphere integrates high performance BlueArc servers with a complete storage software suite including JetClone and JetMirror, delivering maximum simplicity for your virtual environment, without compromising performance, reliability and scalability.

FEATURES

Intuitive	Integrated into the VMware vCenter console
Scalable	256TB file system for nearly unlimited cloning
Dashboard	Easily see vital information at a glance
Groups	Allows virtual machines to be grouped according to your criteria
vApps	Easily snapshot all VMs associated with an application
Streamlined	Manages coordination of snapshots between storage and VMs
Automated	Set schedules and define policies for “set and forget” operation
Non-disruptive	Back-up and recover without impacting performance
Searchable	Quickly find specific snapshots and VMs
Reports	Includes reporting, logging, and events

SYSTEM REQUIREMENTS

BlueArc Software	BlueArc SiliconFS™ 8.0 or later
Network Protocol	NFSv3, NFSv4
VMware Applications	VMware vCenter Server and Client

OPTIONAL LICENSED FEATURES

BlueArc JetClone	Required to create BlueArc managed writable clones
BlueArc JetMirror	Enables fast replication and disaster recovery for virtual environments



BlueArc Corporation
 Corporate Headquarters
 50 Rio Robles
 San Jose, CA 95134
 t 408 576 6600
 f 408 576 6601
 www.bluearc.com

BlueArc UK Ltd.
 European Headquarters
 Queensgate House
 Cookham Road
 Bracknell RG12 1RB, United Kingdom
 t +44 (0) 1344 408 200
 f +44 (0) 1344 408 202